



JONES POTTS TAYLOR



14 Mather Lane

, Leigh, WN7 2FR

£160,000

JonesPottsTaylor are delighted to offer FOR SALE this deceptively spacious, two double bedroom, purpose built apartment. Situated on the ground floor in the sought after Mather House Development within Leigh, close to transport and network links, schools, shops and amenities. The property briefly comprises of; entrance hallway, an open plan living room, dining room and kitchen with central island and integrated appliances, a separate utility, two double bedrooms, one benefitting from an ensuite shower room, and a further family bathroom with three piece suite. The entire living space and each bedroom benefit from 20ft ceilings and industrial/contemporary features.

The development itself has resident-only facilities, including, communal entrance and hallway, a parcel drop-off room, stair and lift access, a gymnasium, cinema room, and a residents lounge, dining and kitchen area with a 24/7 concierge.

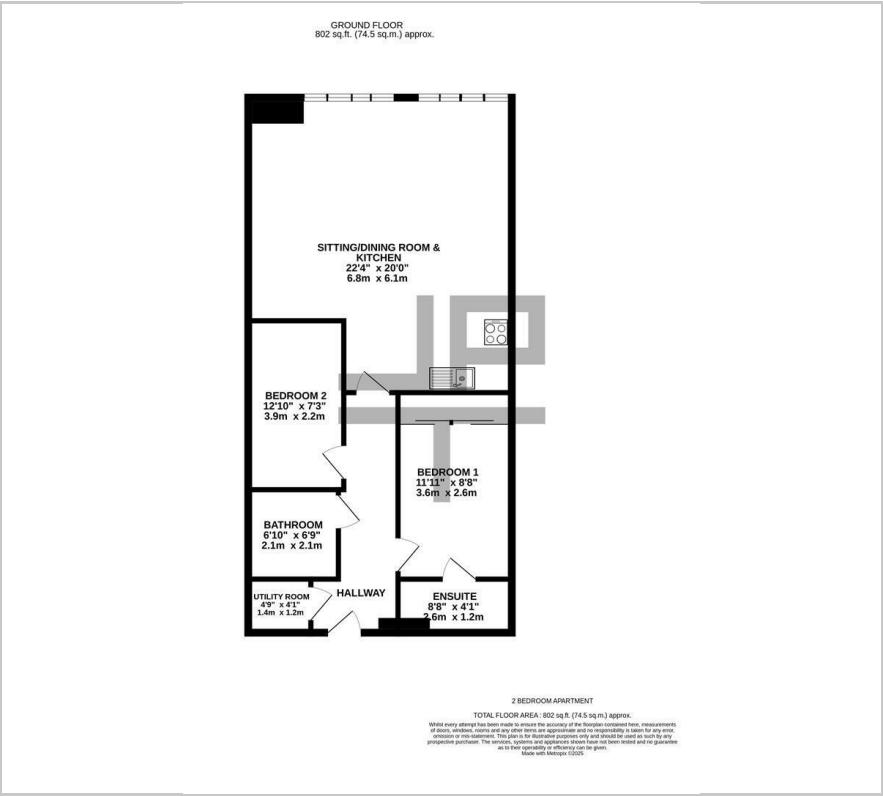
- Ground Floor Apartment
- Open Plan Style Living
- Two Double Bedrooms
- 24/7 Concierge Service
- Communal Gymnasium, Cinema Room & Reception Room Access
- Electric Only Building

Viewing

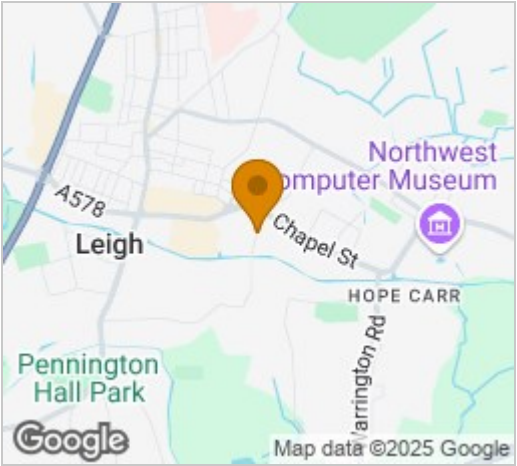
Please contact our Jones Potts Taylor Office on 01942 368600 if you wish to arrange a viewing appointment for this property or require further information.



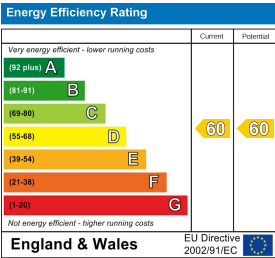
Floor Plan



Area Map



Energy Efficiency Graph



These particulars, whilst believed to be accurate are set out as a general outline only for guidance and do not constitute any part of an offer or contract. Intending purchasers should not rely on them as statements of representation of fact, but must satisfy themselves by inspection or otherwise as to their accuracy. No person in this firms employment has the authority to make or give any representation or warranty in respect of the property.