



# JONES POTTS TAYLOR



## 8 Rainbow Drive

Atherton, Manchester, M46 9ND

£179,950

JonesPottsTaylor are delighted to present FOR SALE this three bedroom semi-detached property. Situated in a residential location in Atherton, central to transport and network links, schools, shops and amenities. The property briefly comprises of; entrance hallway, living room, kitchen / dining room with French doors leading to the rear garden. To the first floor are two double bedrooms, a single bedroom and a further family bathroom with three piece suite. Outside to the front is an open, low maintenance garden with private driveway, whilst to the rear is a generous sized enclosed garden. Viewings for this property are highly recommended to appreciate it's location to transport and network links.

- Solar Panels
- Off Road Parking
- Close To Transport And Network Links
- Potential Investment Opportunity
- UPVC Double Glazed Windows
- Gas Central Heating

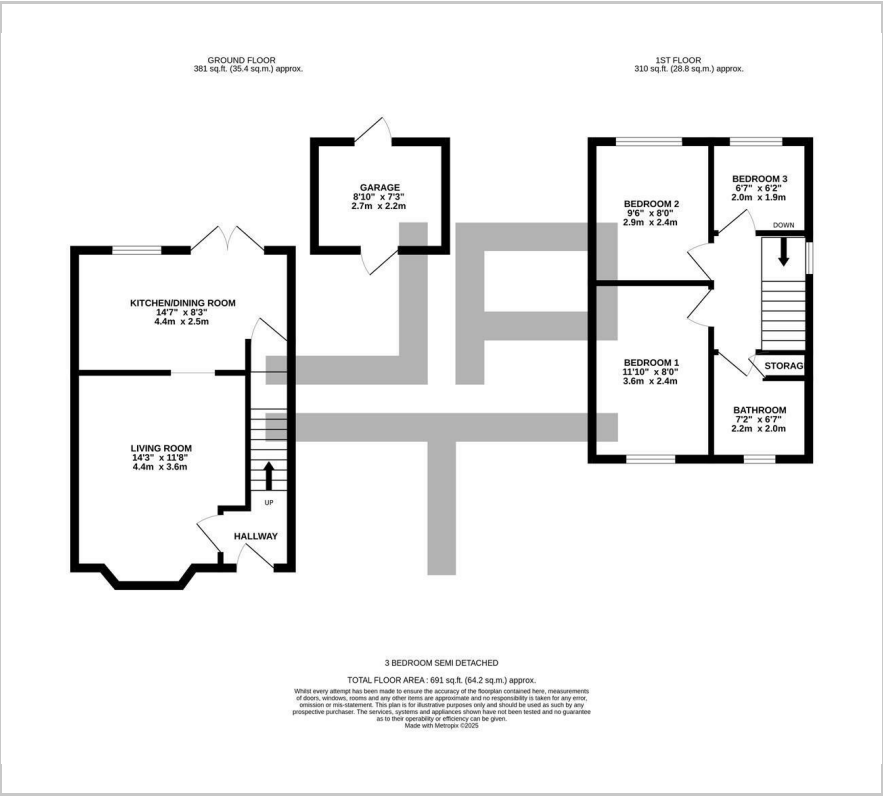
### Viewing

Please contact our Jones Potts Taylor Office on 01942 368600 if you wish to arrange a viewing appointment for this property or require further information.





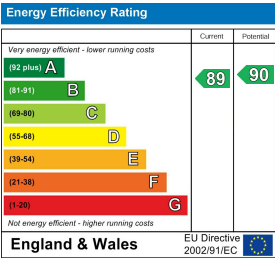
Floor Plan



Area Map



Energy Efficiency Graph



These particulars, whilst believed to be accurate are set out as a general outline only for guidance and do not constitute any part of an offer or contract. Intending purchasers should not rely on them as statements of representation of fact, but must satisfy themselves by inspection or otherwise as to their accuracy. No person in this firms employment has the authority to make or give any representation or warranty in respect of the property.