



JONES POTTS TAYLOR



459 Rochdale Old Road

, Bury, BL9 7TB

£900 PCM

JonesPottsTaylor are pleased to present TO LET this fully furnished Studio ensuite room in a six bedroom mid-terrace property. Situated in a well regarded residential area of Bury, opposite Fairfield General Hospital, close to transport and network links, shops and amenities. The accommodation on offer comprises of; communal entrance and hallway, private entrance, an open plan studio style living space with kitchenette, a double bed and a private ensuite shower room. All residents have 24hr access to a communal kitchen and garden space. All utilities, broadband and a regular communal cleaner are included.

This beautifully designed property offers the perfect blend of comfort, convenience, and style, ideal for professionals looking for a high-quality living space.

Viewings will be required and under a block viewing schedule.

- Single Occupancy
- All Utilities & Broadband Included
- Close To Fairfield General Hospital & Transport Links
- Shared Rear Private Garden
- Smart TVs Included In All Rooms
- Regular Communal Cleaner Included

Viewing

Please contact our Jones Potts Taylor Office on 01942 368600 if you wish to arrange a viewing appointment for this property or require further information.



1



1



1

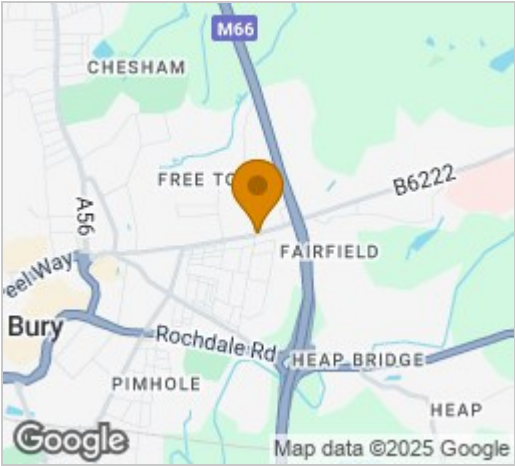


C

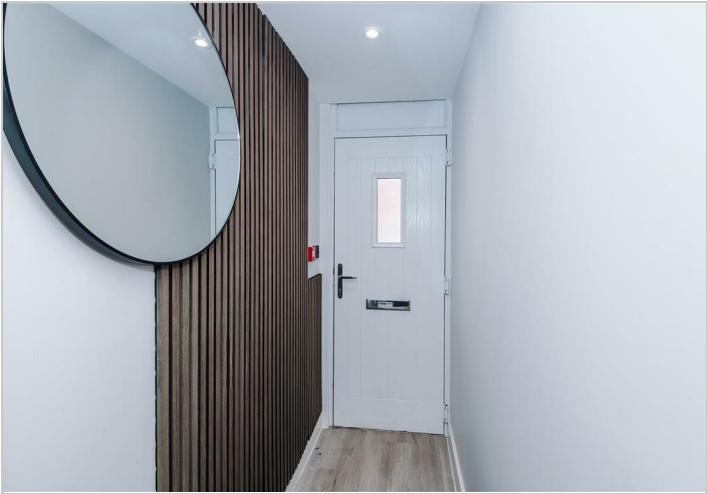
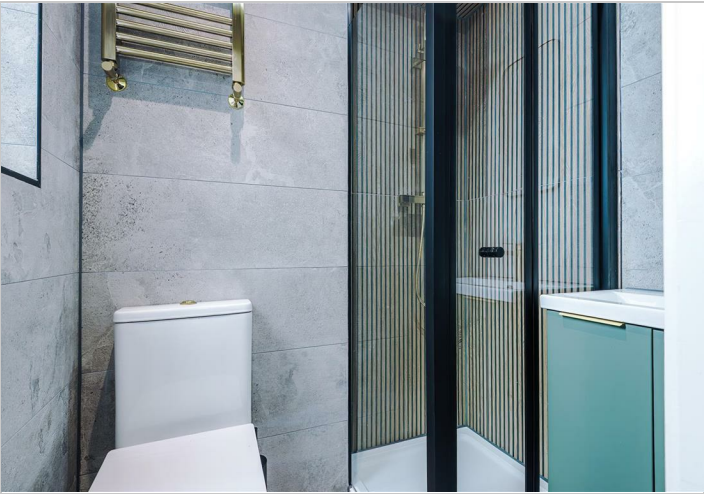
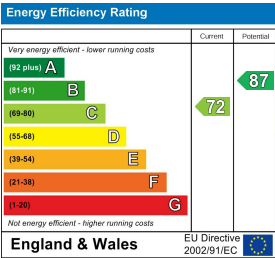
Floor Plan



Area Map



Energy Efficiency Graph



These particulars, whilst believed to be accurate are set out as a general outline only for guidance and do not constitute any part of an offer or contract. Intending purchasers should not rely on them as statements of representation of fact, but must satisfy themselves by inspection or otherwise as to their accuracy. No person in this firms employment has the authority to make or give any representation or warranty in respect of the property.