



JONES POTTS TAYLOR



61 Battersby Street

, Leigh, WN7 2AH

£850 PCM

JonesPottsTaylor are pleased to present TO LET this two-bedroom, pavement fronted, mid-terrace property. Situated in the popular residential location of Leigh, close to transport and network links, schools, shops and amenities. The property briefly comprises of; entrance into sitting room leading to a modern dining kitchen. To the first floor are two bedrooms and a family bathroom with three-piece suite. Outside to the rear is an enclosed low maintenance garden. Viewings for this property are under a block viewing schedule.

Viewing

Please contact our Jones Potts Taylor Office on 01942 368600 if you wish to arrange a viewing appointment for this property or require further information.



2



1

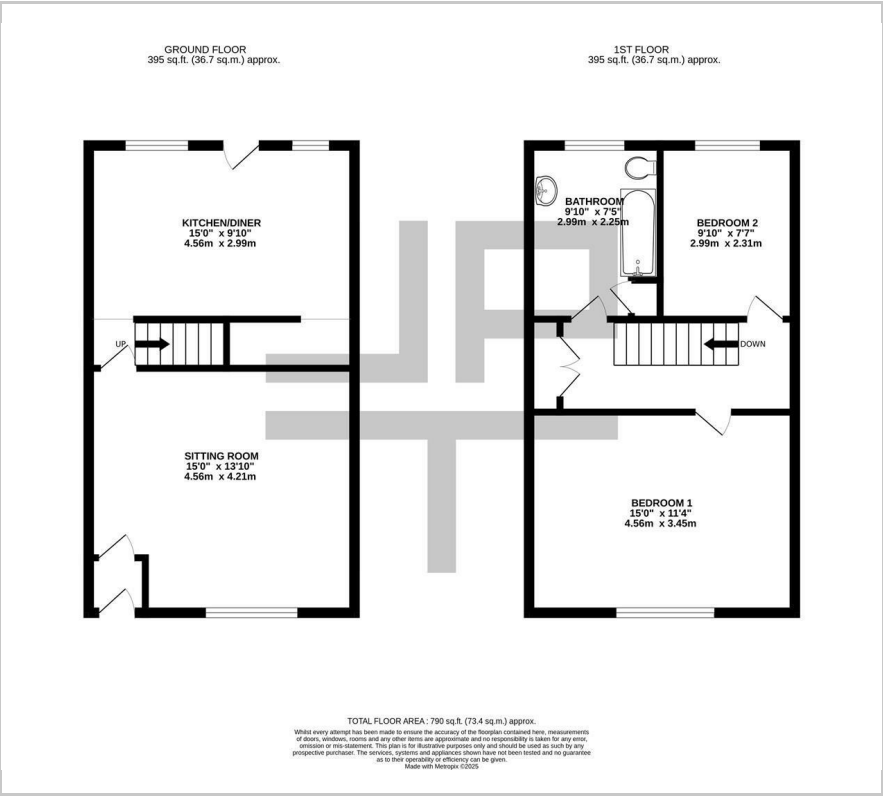


1

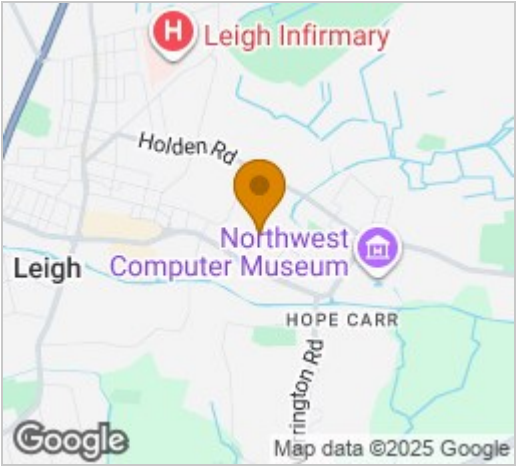


C

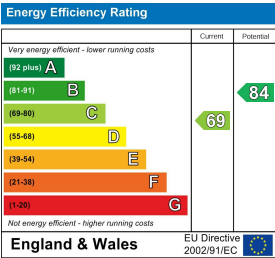
Floor Plan



Area Map



Energy Efficiency Graph



These particulars, whilst believed to be accurate are set out as a general outline only for guidance and do not constitute any part of an offer or contract. Intending purchasers should not rely on them as statements of representation of fact, but must satisfy themselves by inspection or otherwise as to their accuracy. No person in this firms employment has the authority to make or give any representation or warranty in respect of the property.