



JONES POTTS TAYLOR



7 Moor Lane

, Leigh, WN7 5JF

£325,000

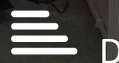
JonesPottsTaylor are delighted to present FOR SALE this extended three bedroom, detached true bungalow. Situated in a sought after residential location in Leigh, close to transport and network links, schools, shops and amenities. The property briefly comprises of; entrance hallway, an open plan sitting room / dining room, a separate kitchen, conservatory featuring French doors leading to the rear garden, two double bedrooms, master benefitting from fitted wardrobes and an ensuite, a single bedroom and a further family bathroom with three piece suite. Outside to the front is a large open well maintained garden, to the rear sits a private enclosed low maintenance garden, whilst to the side is a driveway which leads to a detached garage.

Viewings for this property are a must to appreciate its sought after location and potential development opportunity.

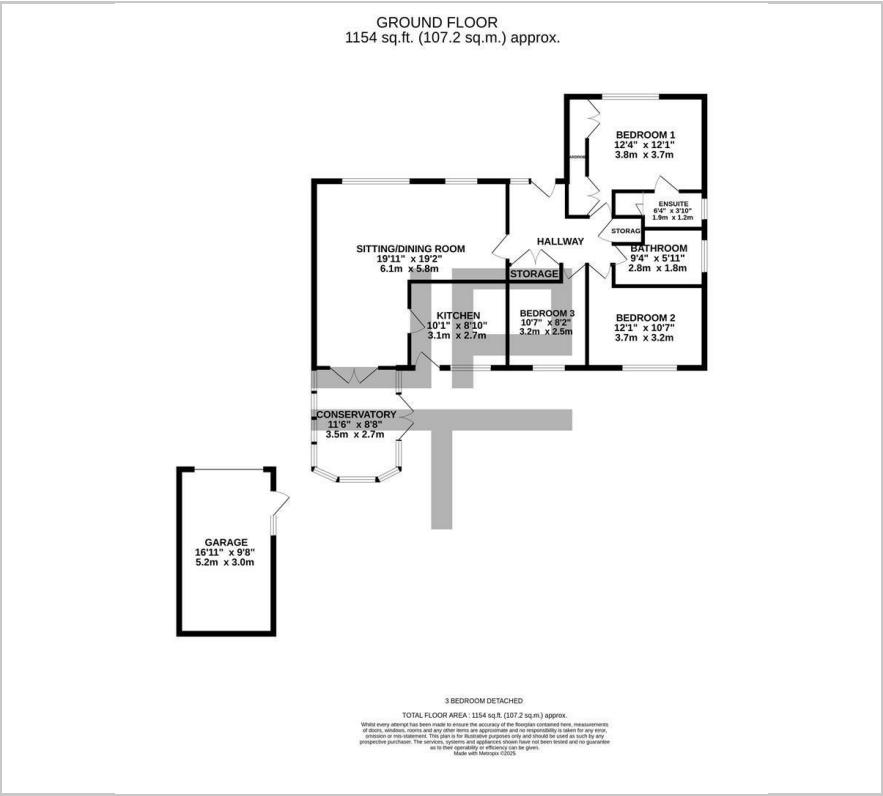
- No Onward Chain
- Sought After Cul-De-Sac Location
- Within Primary & Secondary School Catchment
- Potential Development Opportunity
- Detached Garage & Driveway
- Gas Central Heating & Double Glazed PVC Windows

Viewing

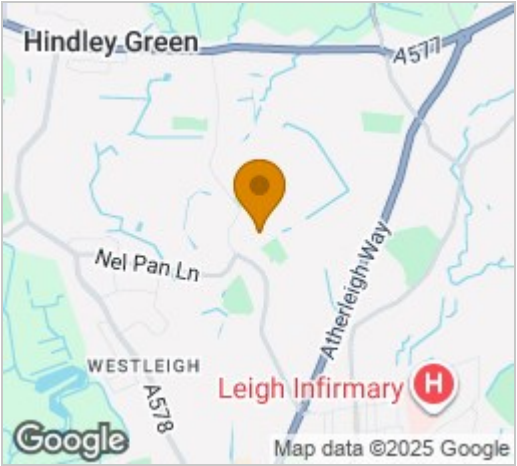
Please contact our Jones Potts Taylor Office on 01942 368600 if you wish to arrange a viewing appointment for this property or require further information.



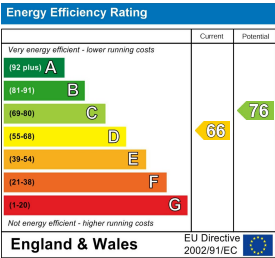
Floor Plan



Area Map



Energy Efficiency Graph



These particulars, whilst believed to be accurate are set out as a general outline only for guidance and do not constitute any part of an offer or contract. Intending purchasers should not rely on them as statements of representation of fact, but must satisfy themselves by inspection or otherwise as to their accuracy. No person in this firms employment has the authority to make or give any representation or warranty in respect of the property.