



JONES POTTS TAYLOR



46 Lemon Street

Tyldesley, Manchester, M29 8HT

Offers in excess of £160,000

JonesPottsTaylor are pleased to present FOR SALE this two-bedroom, pavement fronted, mid terrace property. Situated in the popular residential location of Tyldesley, close to major transport and network links, schools, shops and amenities. Within walking distance of the guided busway. The property briefly comprises of; entrance vestibule, sitting room and dining kitchen to ground floor. To the first floor are two bedrooms and a family bathroom with three piece suite. To the rear is a low maintenance garden.

Viewings for this property are a must to appreciate the sought after location and access to major transport links.

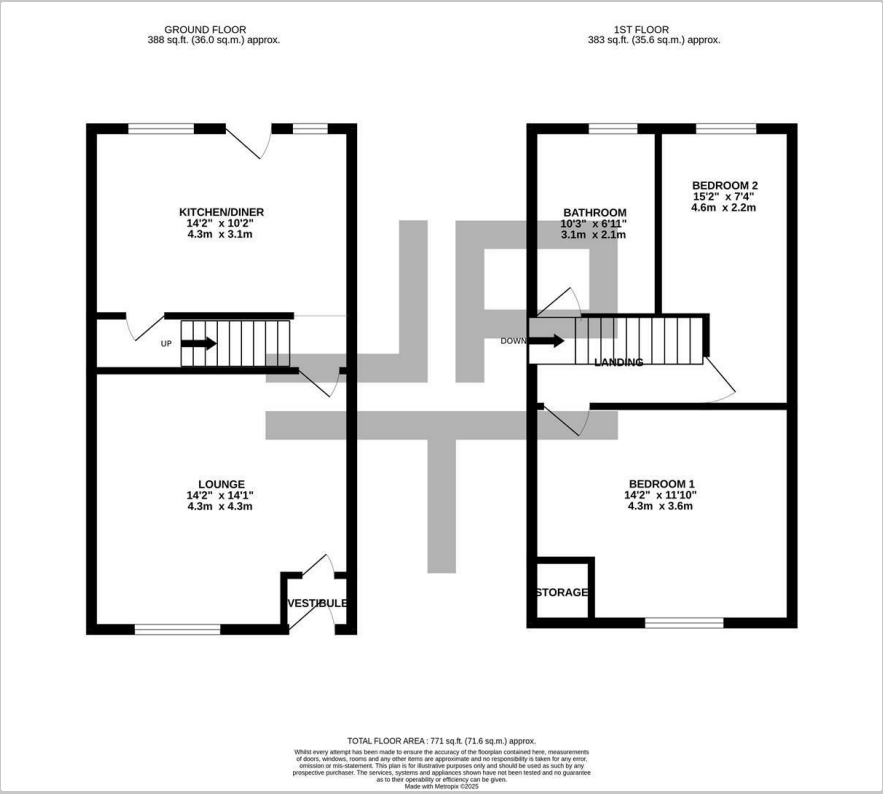
Viewing

Please contact our Jones Potts Taylor Office on 01942 368600 if you wish to arrange a viewing appointment for this property or require further information.

- Popular Residential Location
- Gas Central Heating & UPVC Double Glazed Windows
- Walking Distance To Guided Bus Way
- No Onward Chain
- Internal Viewing Recommended



Floor Plan



Area Map



Energy Efficiency Graph



These particulars, whilst believed to be accurate are set out as a general outline only for guidance and do not constitute any part of an offer or contract. Intending purchasers should not rely on them as statements of representation of fact, but must satisfy themselves by inspection or otherwise as to their accuracy. No person in this firms employment has the authority to make or give any representation or warranty in respect of the property.