



# JONES POTTS TAYLOR



## 14 Salkeld Avenue

Ashton-In-Makerfield, Wigan, WN4 9NH

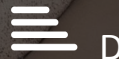
£330,000

JonesPottsTaylor are delighted to present FOR SALE this extended, three bedroom detached property. Situated in a sought after residential location in Ashton-In-Makerfield, close to transport and network links, primary and secondary schools, shops, amenities and the green space of Skitters Woodland. The property briefly comprises of; entrance hallway, downstairs cloakroom / W.C, living room with an open staircase rising to the first floor, dining / family room, a separate kitchen, utility and conservatory featuring French doors leading to the rear garden. To the first floor are three double bedrooms, two of which benefit from fitted wardrobes, and a further four piece family bathroom. Outside to the front is an open garden with driveway and access to an integral garage, whilst to the rear is a large enclosed, low maintenance garden. Viewings are highly recommended to appreciate the prime location and both the living / outside space.

- Within The Woodedge Cul-De-Sac Location
- Close To Skitters Woodland
- Three Reception Rooms
- Three Double Bedrooms
- Integral Garage & Driveway
- Gas Central Heating & Double Glazed Windows

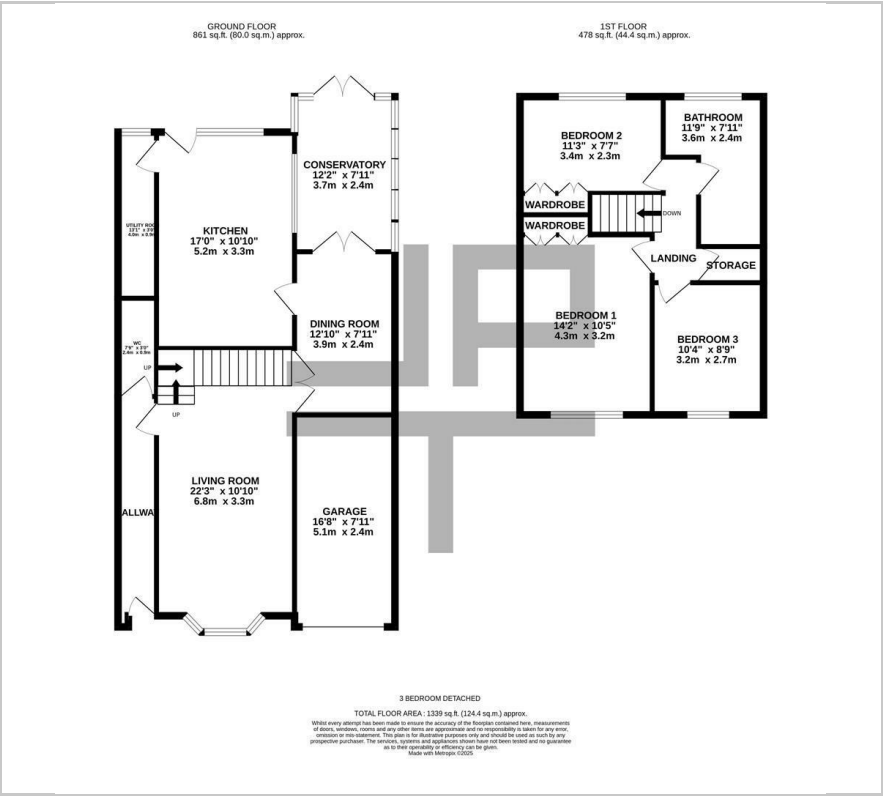
### Viewing

Please contact our Jones Potts Taylor Office on 01942 368600 if you wish to arrange a viewing appointment for this property or require further information.

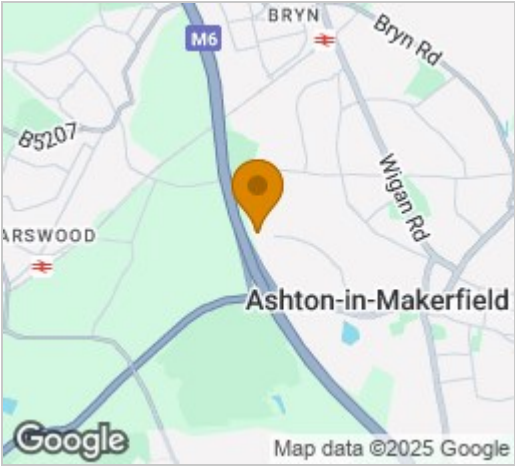




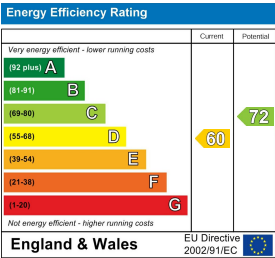
Floor Plan



Area Map



Energy Efficiency Graph



These particulars, whilst believed to be accurate are set out as a general outline only for guidance and do not constitute any part of an offer or contract. Intending purchasers should not rely on them as statements of representation of fact, but must satisfy themselves by inspection or otherwise as to their accuracy. No person in this firms employment has the authority to make or give any representation or warranty in respect of the property.