



JONES POTTS TAYLOR



14 Lawson Avenue

, Leigh, WN7 5NP

£230,000

JonesPottsTaylor are delighted to offer FOR SALE this well presented extended three-bedroom semi-detached property. Situated in a sought-after residential location in Leigh close to local schools, shops, amenities and transport links. The property briefly comprises of; entrance hallway, living room, newly fitted kitchen / dining room, downstairs WC and conservatory with French doors opening to the rear garden. To the first floor are three bedrooms and a further family bathroom with three-piece suite. Outside to the front is an open garden and driveway, providing off road parking, leading to an attached garage, whilst to the rear is an enclosed low maintenance garden. Viewings for this property are a must!

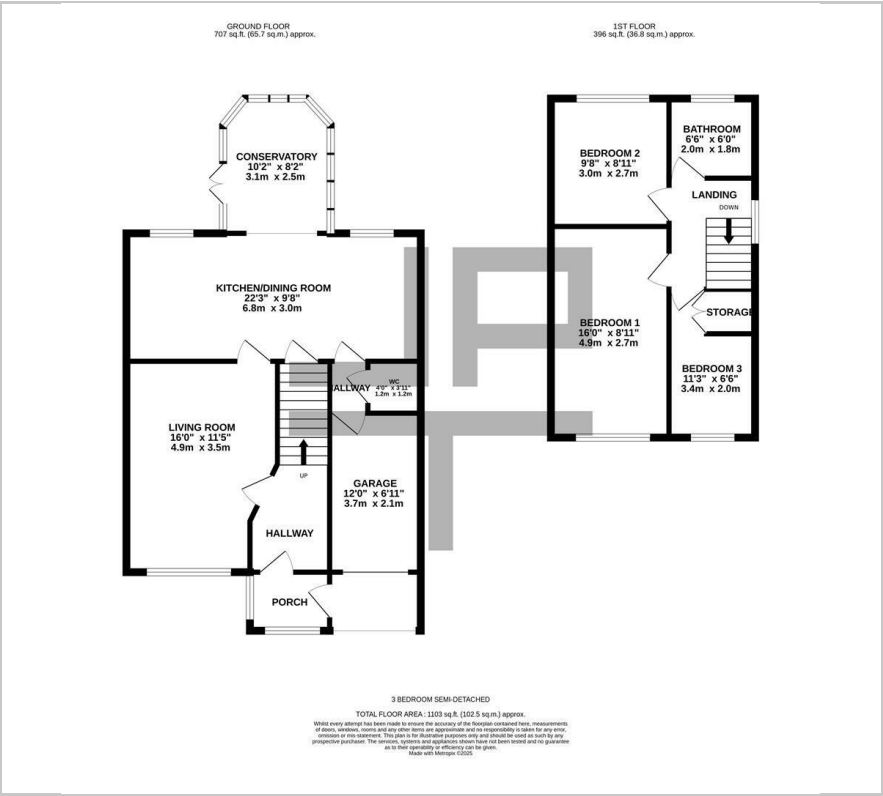
- Extended Semi Detached Property
- Sought After Location
- Three Bedrooms
- Conservatory and Garage
- Internal Viewing A Must
- Freehold

Viewing

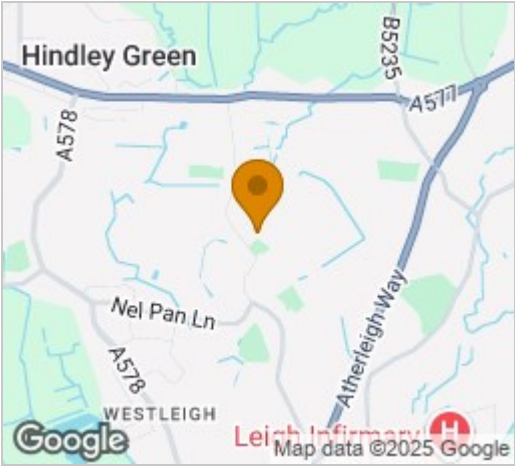
Please contact our Jones Potts Taylor Office on 01942 368600 if you wish to arrange a viewing appointment for this property or require further information.



Floor Plan



Area Map



Energy Efficiency Graph



These particulars, whilst believed to be accurate are set out as a general outline only for guidance and do not constitute any part of an offer or contract. Intending purchasers should not rely on them as statements of representation of fact, but must satisfy themselves by inspection or otherwise as to their accuracy. No person in this firms employment has the authority to make or give any representation or warranty in respect of the property.