



JONES POTTS TAYLOR



33b North Croft

Atherton, Manchester, M46 0SW

£850 PCM

JonesPottsTaylor are delighted to present TO LET this two bedroom, mid-terrace property. Located in a popular residential area of Atherton, close to schools, shops, amenities and network links. The property briefly comprises of; entrance hallway, downstairs W.C, a separate kitchen and living room with patio doors leading to a rear yard. To the first floor are two well-proportioned bedrooms and a further family bathroom with three piece suite. Outside to the rear is an enclosed low maintenance yard on a split level, whilst to the front is an open garden and off road parking.

Viewings will be required and under a block viewing schedule.

Viewing

Please contact our Jones Potts Taylor Office on 01942 368600 if you wish to arrange a viewing appointment for this property or require further information.



2



1



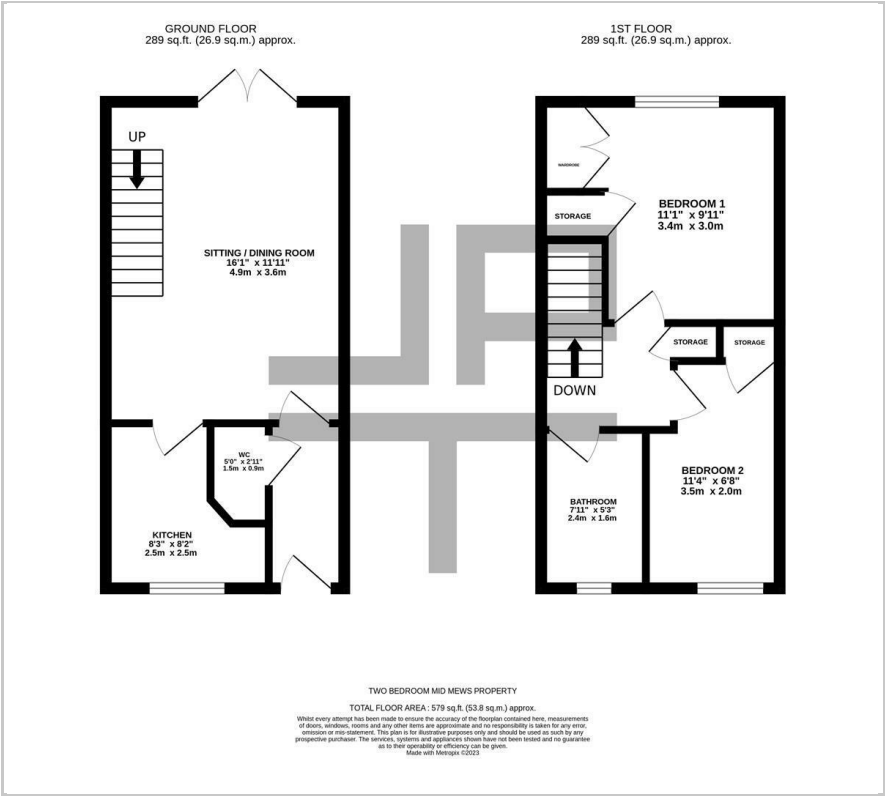
1



C



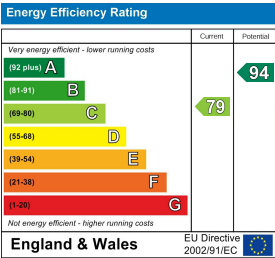
Floor Plan



Area Map



Energy Efficiency Graph



These particulars, whilst believed to be accurate are set out as a general outline only for guidance and do not constitute any part of an offer or contract. Intending purchasers should not rely on them as statements of representation of fact, but must satisfy themselves by inspection or otherwise as to their accuracy. No person in this firms employment has the authority to make or give any representation or warranty in respect of the property.