



## 4 Partington Street

Worsley, Manchester, M28 2SY

Offers in excess of £210,000

JonesPottsTaylor are pleased to present FOR SALE this two bedroom, pavement fronted, mid-terrace property. Situated in the popular residential location of Worsley, close to major transport and network links, schools, shops and amenities. The property briefly comprises of; entrance vestibule, sitting room, kitchen and a rear porch area / utility. To the first floor is are two double bedrooms and a family bathroom with three piece suite. Outside to the rear is a enclosed low maintenance garden and beyond the boundary is a local shared community garden space. Viewings for this property are a must to appreciate the sought after location, community vibe and living space.

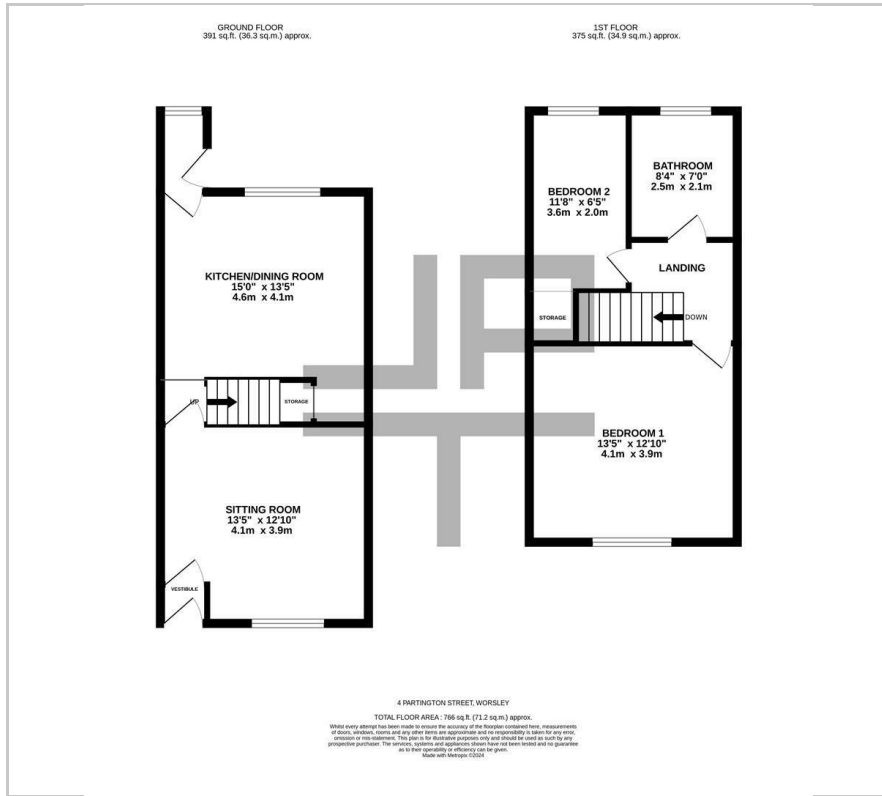
### Viewing

Please contact our Jones Potts Taylor Office on 01942 368600 if you wish to arrange a viewing appointment for this property or require further information.

- No Onward Chain
- Sought After Residential Area
- Close To Major Transport & Network Links
- Private & Communal Shared Garden Space
- Two Double Bedrooms
- UPVC Double Glazed Windows



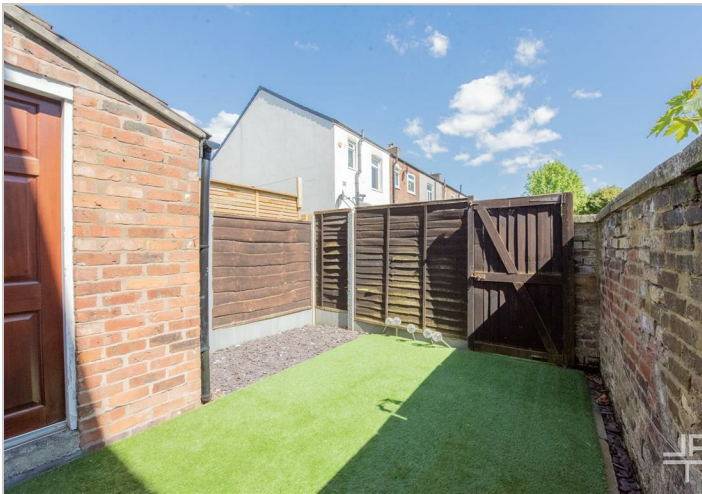
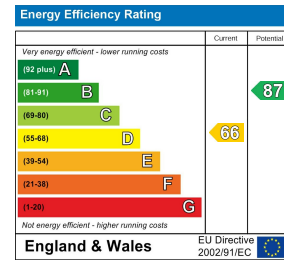
## Floor Plan



## Area Map



## Energy Efficiency Graph



These particulars, whilst believed to be accurate are set out as a general outline only for guidance and do not constitute any part of an offer or contract. Intending purchasers should not rely on them as statements of representation of fact, but must satisfy themselves by inspection or otherwise as to their accuracy. No person in this firm's employment has the authority to make or give any representation or warranty in respect of the property.