



JONES POTTS TAYLOR



14 New Street

Platt Bridge, Wigan, WN2 5JB

£825

JonesPottsTaylor are delighted to present TO LET this two-bedroom, semi-detached property. Situated in a residential location in Platt Bridge, close to transport and network links, schools, shops and amenities. The property briefly comprises of; entrance hallway, sitting room leading dining room and a separate kitchen benefitting from French doors leading to the rear garden. To the first floor are two double bedrooms, master benefitting from fitted wardrobes and a family bathroom with three piece suite. Outside to the front is an enclosed low maintenance garden. To the side is a shared driveway with access to the rear enclosed low maintenance garden.

Viewings will be required and under a block viewing schedule.

Viewing

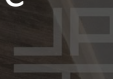
Please contact our Jones Potts Taylor Office on 01942 368600 if you wish to arrange a viewing appointment for this property or require further information.



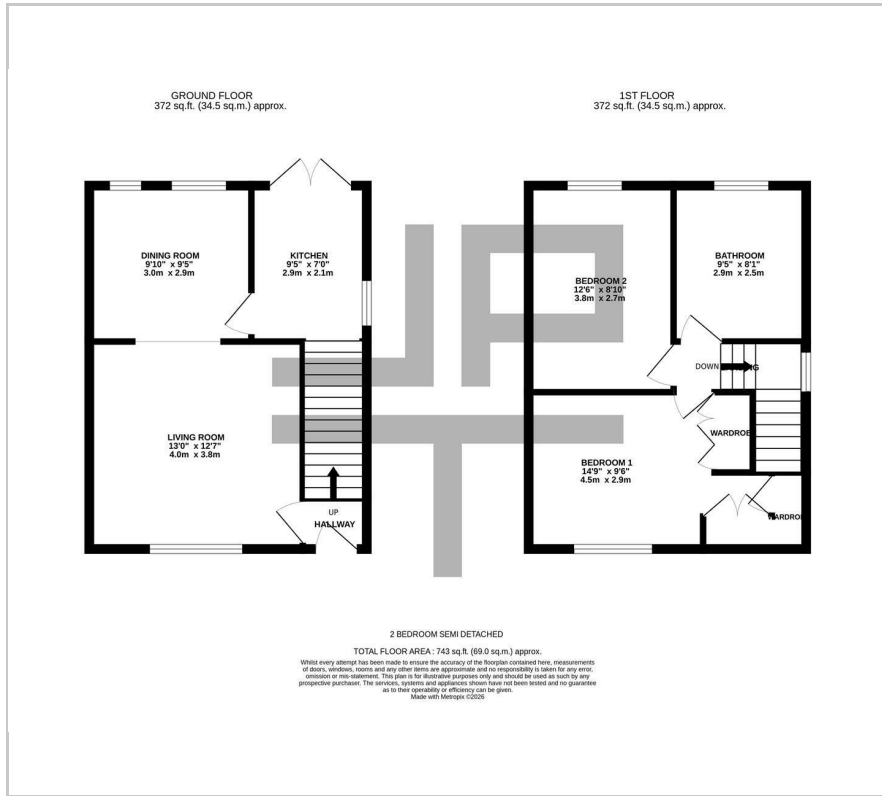
null



C



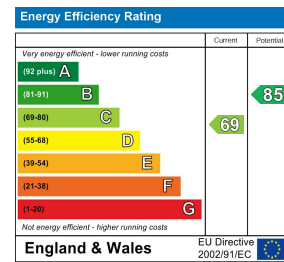
Floor Plan



Area Map



Energy Efficiency Graph



These particulars, whilst believed to be accurate are set out as a general outline only for guidance and do not constitute any part of an offer or contract. Intending purchasers should not rely on them as statements of representation of fact, but must satisfy themselves by inspection or otherwise as to their accuracy. No person in this firm's employment has the authority to make or give any representation or warranty in respect of the property.