



10 Bowling Green Row

Atherton, Manchester, M46 0PR

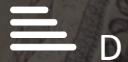
£895 PCM

JonesPottsTaylor are delighted to present TO LET this PART FURNISHED, two bedroom, mid terrace property. Positioned within a quiet location, in a popular residential area of Atherton, close to schools, shops, amenities and transport links. The property briefly comprises of: entrance into living room and kitchen / dining room. To the first floor is a double bedroom and a family bathroom with three piece suite. To the second floor is a further double bedroom. Outside to front is an open pathway with views across an open green, whilst to the rear is an enclosed low maintenance garden,

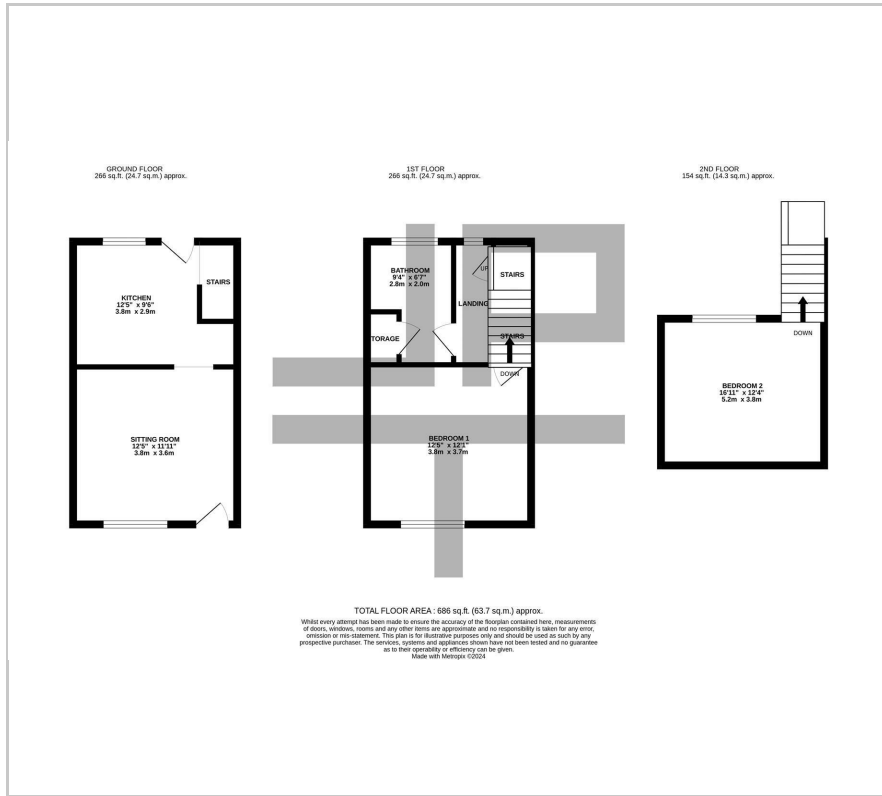
Viewings will be required and under a block viewing schedule.

Viewing

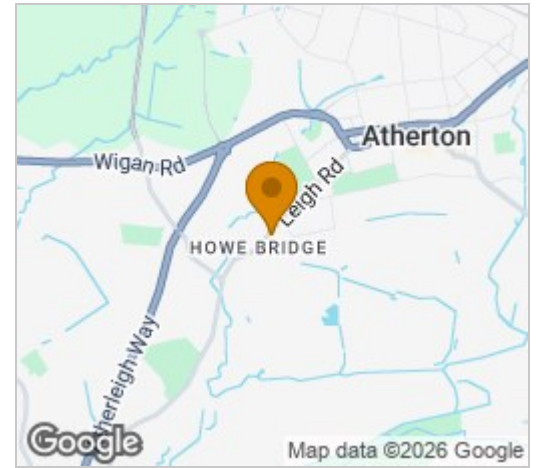
Please contact our Jones Potts Taylor Office on 01942 368600 if you wish to arrange a viewing appointment for this property or require further information.



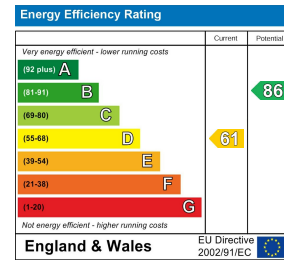
Floor Plan



Area Map



Energy Efficiency Graph



These particulars, whilst believed to be accurate are set out as a general outline only for guidance and do not constitute any part of an offer or contract. Intending purchasers should not rely on them as statements of representation of fact, but must satisfy themselves by inspection or otherwise as to their accuracy. No person in this firm's employment has the authority to make or give any representation or warranty in respect of the property.