



1 Trinity Place

, Leigh, WN7 5SL

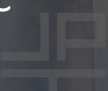
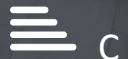
£190,000

JonesPottsTaylor are delighted to present FOR SALE this deceptively spacious three bedroom end terraced property. Situated in a popular residential location in Leigh, close to transport and network links, schools, shops and amenities. The property briefly comprises of; entrance hallway, downstairs W.C / cloakroom, living room with French doors opening to the rear garden and kitchen / dining room. To the first floor are two double bedrooms, master with ensuite shower room, and a family bathroom with three piece suite. To the second floor is a further double bedroom. Outside to the front is an open garden and driveway, whilst to the rear is enclosed, low maintenance, private garden. Viewings for this property are a must to appreciate its sought after location and living space.

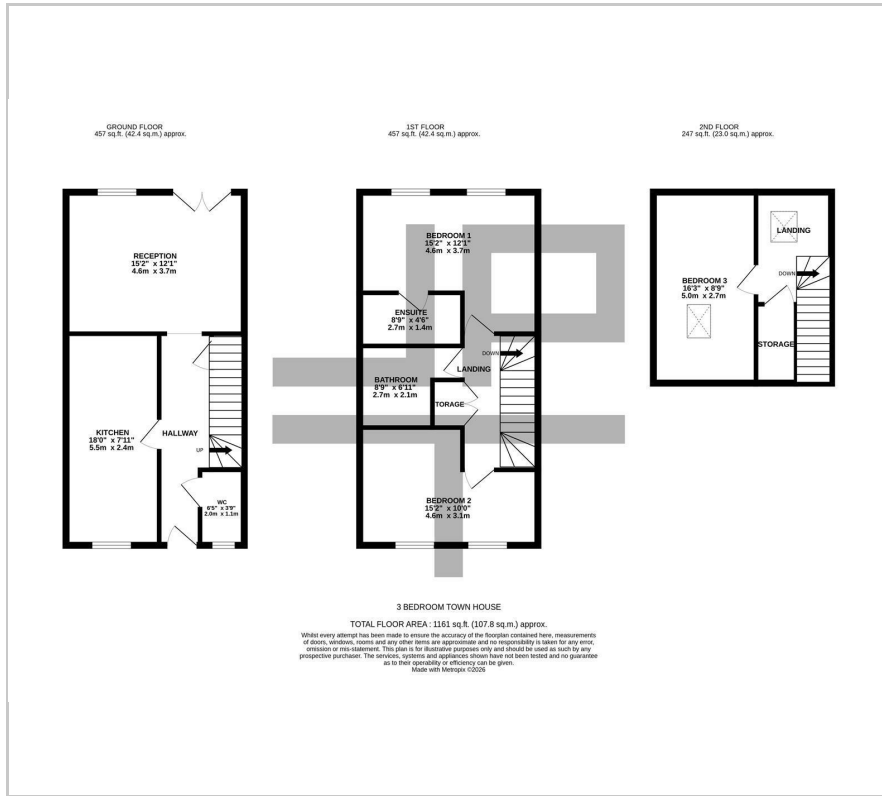
- No Onward Chain
- Close To Network & Transport Links
- Three Double Bedrooms Over Three Floors
- Three Bathrooms
- Private Rear Garden
- Driveway Proving Off Road Parking

Viewing

Please contact our Jones Potts Taylor Office on 01942 368600 if you wish to arrange a viewing appointment for this property or require further information.



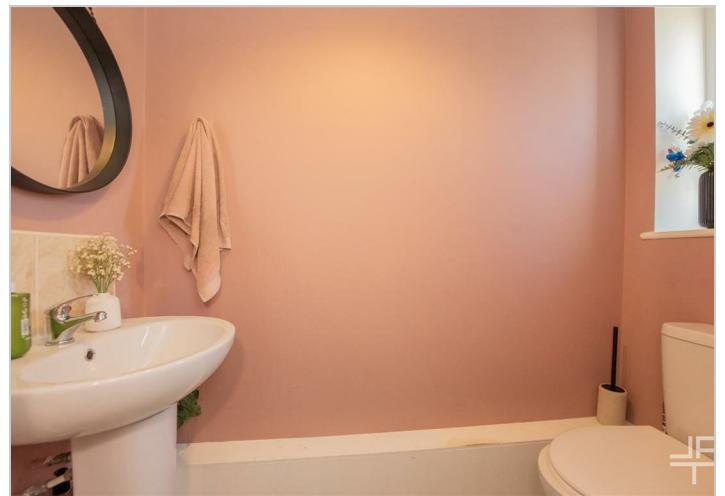
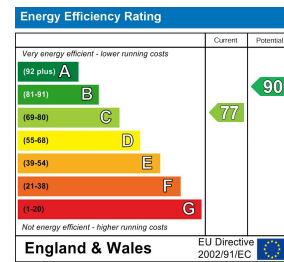
Floor Plan



Area Map



Energy Efficiency Graph



These particulars, whilst believed to be accurate are set out as a general outline only for guidance and do not constitute any part of an offer or contract. Intending purchasers should not rely on them as statements of representation of fact, but must satisfy themselves by inspection or otherwise as to their accuracy. No person in this firm's employment has the authority to make or give any representation or warranty in respect of the property.