



59 Hawkhurst Park

, Leigh, WN7 2TG

£289,950

JonesPottsTaylor are delighted to present FOR SALE this spacious, four bedroom, mews. Situated in the popular Bedford area of Leigh, close to local schools, shops, transport and network links and amenities. The property briefly comprises of; entrance hallway, downstairs W.C, reception / bedroom, kitchen / dining area with French doors opening to the rear garden. To the first floor, a reception / bedroom, double bedroom and a family bathroom with three piece suite. The master bedroom with ensuite a further double bedroom, both benefitting from fitted wardrobes can be found on the second floor. Outside to the front offers off road parking for two vehicles, whilst to the rear is an enclosed low maintenance garden, including a spacious garden room / bar. Viewings are a must to appreciate how versatile this property is.

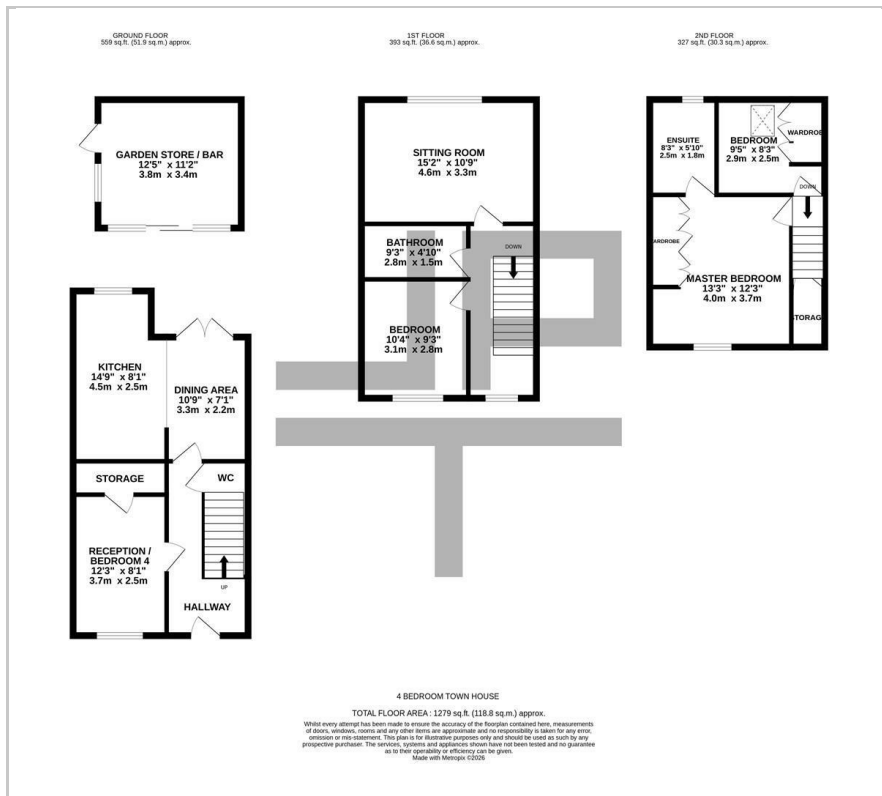
- Sought After Cul De Sac Location
- Versatile Layout Opportunities
- Bar / Garden Room With Electrics
- Tenure - Freehold
- Off Road Parking
- UPVC Double Glazed Windows & Gas Central Heating

Viewing

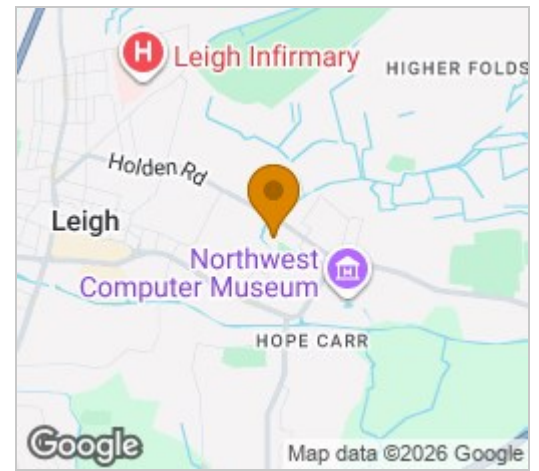
Please contact our Jones Potts Taylor Office on 01942 368600 if you wish to arrange a viewing appointment for this property or require further information.



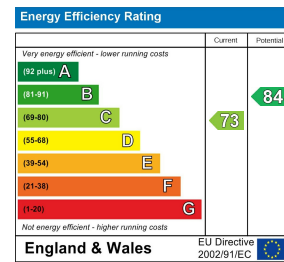
Floor Plan



Area Map



Energy Efficiency Graph



These particulars, whilst believed to be accurate are set out as a general outline only for guidance and do not constitute any part of an offer or contract. Intending purchasers should not rely on them as statements of representation of fact, but must satisfy themselves by inspection or otherwise as to their accuracy. No person in this firm's employment has the authority to make or give any representation or warranty in respect of the property.